

CERTIFICATE OF POSTING
USE BY SPECIAL REVIEW

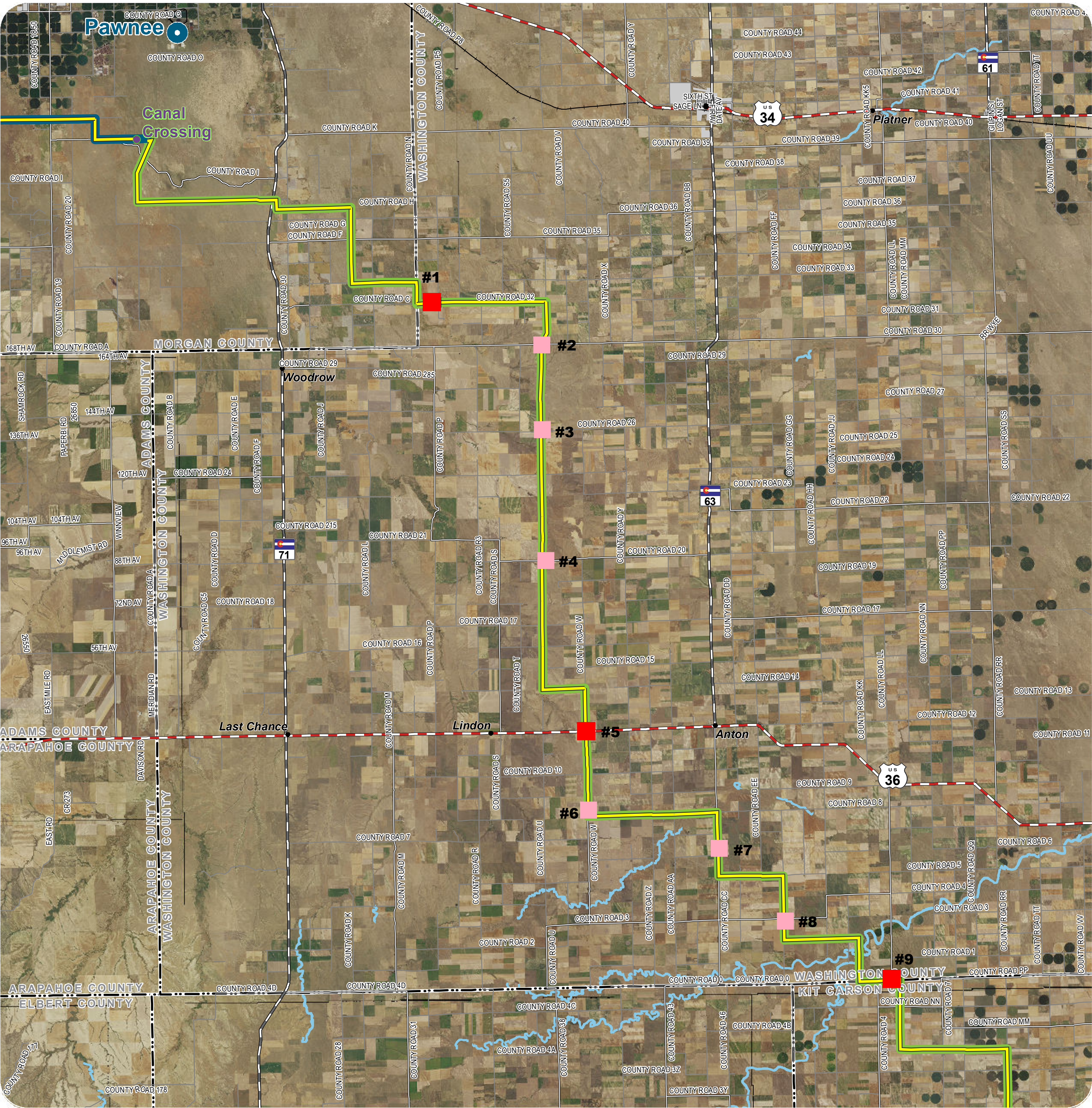
I Riley Ross hereby certify that on the 5th day of September, 2022 I personally caused to be posted a NOTICE OF PUBLIC HEARING sign for XCEL Energy Power Pathway Transmission Lines. A picture of said posting is attached hereto and upon subsequent inspection the sign was still posted on September 1st, 2022 (at least 14 days after initial posting date.) I further affirm that the sign was posted for at least 14 days prior to the Public Hearing before the Washington County Board of County Commissioners.

Riley Ross
Person posting sign

NOTE:

Be sure to take picture close enough to sign so wording is easily readable. Thank you.

COLORADO'S POWER PATHWAY



Legend

- Proposed Substation Location
- Proposed Transmission Route
- Segment 1
- Segment 2

Hydrology

(NHD 2020)

Waterbody

Boundary

(CDOT 2021, DOLA 2021)

Municipal Boundary

County

Transportation

(CDOT 2021, BTS 2020)

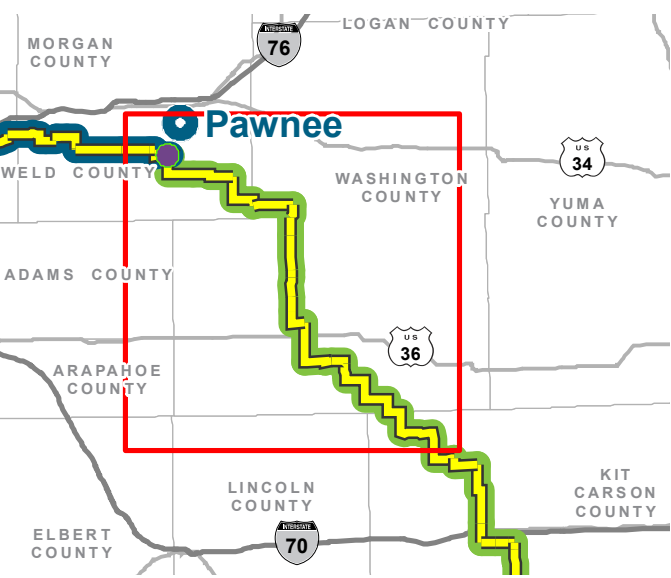
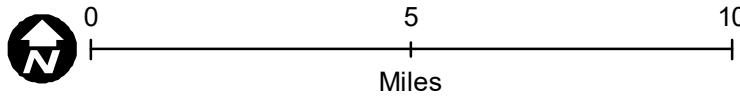
Interstate

U.S. Highway

State Highway

Local Road

Railroad



PRELIMINARY, SUBJECT TO CHANGE
The information contained herein is believed to be accurate and suitable for limited internal uses only. Xcel Energy Public Service Company of Colorado makes no warranty as to the accuracy or suitability of any information contained herein for use by third parties. The accuracy of this map and the information depicted should be verified prior to use. The user shall assume all risk and responsibility for any and all damages, including consequential damages, which may arise from the user's reliance on this information.

Revised: 6/16/2022 | NOT FOR CONSTRUCTION

Path: P:\1163_0039_CO_Pathway_Permits\GIS\Layouts\Permitting\Washington_Co\WashingtonCo_Overview_18x24.mxd

COLORADO'S POWER PATHWAY
WASHINGTON COUNTY SIGN POSTING PHOTOS
INITIAL SIGN POSTING – SEPTEMBER 1, 2022



Location 1.



Location 2.

COLORADO'S POWER PATHWAY
WASHINGTON COUNTY SIGN POSTING PHOTOS
INITIAL SIGN POSTING – SEPTEMBER 1, 2022



Location 3.



Location 4.

COLORADO'S POWER PATHWAY
WASHINGTON COUNTY SIGN POSTING PHOTOS
INITIAL SIGN POSTING – SEPTEMBER 1, 2022



Location 5.



Location 6.

COLORADO'S POWER PATHWAY
WASHINGTON COUNTY SIGN POSTING PHOTOS
INITIAL SIGN POSTING – SEPTEMBER 1, 2022



Location 7.



Location 8.

COLORADO'S POWER PATHWAY
WASHINGTON COUNTY SIGN POSTING PHOTOS
INITIAL SIGN POSTING – SEPTEMBER 1, 2022



Location 9.

COLORADO'S POWER PATHWAY
WASHINGTON COUNTY SIGN POSTING PHOTOS
SIGN MONITORING – SEPTEMBER 14, 2022



Location 1.



Location 2.

COLORADO'S POWER PATHWAY
WASHINGTON COUNTY SIGN POSTING PHOTOS
SIGN MONITORING – SEPTEMBER 14, 2022



Location 3.



Location 4.

COLORADO'S POWER PATHWAY
WASHINGTON COUNTY SIGN POSTING PHOTOS
SIGN MONITORING – SEPTEMBER 14, 2022



Location 5.



Location 6.

COLORADO'S POWER PATHWAY
WASHINGTON COUNTY SIGN POSTING PHOTOS
SIGN MONITORING – SEPTEMBER 14, 2022



Location 7.



Location 8.

COLORADO'S POWER PATHWAY
WASHINGTON COUNTY SIGN POSTING PHOTOS
SIGN MONITORING – SEPTEMBER 14, 2022



Location 9.